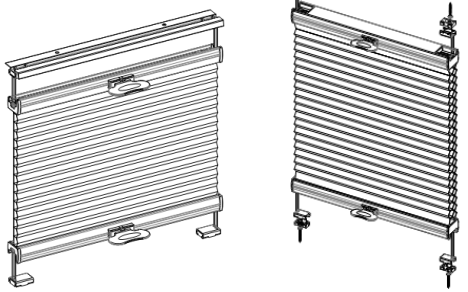


N300476-9
65101-11728-I

Installation Instructions

Honeycomb Shades

SmartFit™



With Rail Cover

Without Rail Cover

Getting Started





Remove the shade from the package. Save the packaging until the shade is installed and working to your satisfaction.

Tools Needed:

- Power drill and drill bit
- Measuring tape
- Screwdriver
- Level
- Pencil



You will need to use the following fasteners for your particular mounting surface.

Surface	Fastener
Wood	M3.5x25mm Screws (Provided) 
	M3.8x38mm 
Drywall/Plaster	Wall Anchors, Expansion Bolts (Not Provided) 
Metal	Sheet Metal Screws (Not Provided) 

Hardware

Order Width (X)	X ≤ 50"	X > 50"
Handle	2	4
Cord Equalizer Housing Base (with Rail Cover)	2	
Cord Equalizer Housing Base (without Rail Cover)	4	
L Bracket (for 3/8" S, Outside Mount) (with Rail Cover)	2	N/A
L Bracket (for 3/8" S, Outside Mount) (without Rail Cover)	4	N/A
L Bracket for windows with marble sill (Optional)	2	

Order Width (X)	X ≤ 50"	X > 50"
L bracket (for 3/4" S, 1/2" D & 9/16" S, Outside Mount) (without Rail Cover)	2	
L bracket (for 3/4" S, 1/2" D & 9/16" S, Outside Mount) (without Rail Cover)	4	
M3.5x25mm Screw (for Base, 3/8" S, Inside Mount) (with Rail Cover)	8.5" < X ≤ 40", 4 40" < X ≤ 50", 5	N/A
M3.5x25mm Screw (for Base, 3/8" S, 3/4" S, 1/2" D & 9/16" S, Inside Mount) (without Rail Cover)	4	
M3.5x25mm Screw (for Base, 3/4" S, 1/2" D & 9/16" S, Inside Mount) (with Rail Cover)	8.5" < X ≤ 40", 4 40" < X ≤ 52", 5 52" < X ≤ 72", 6	
1 1/4" Screw (for Base, 1 1/4" S & 3/4" D, Inside Mount) (with Rail Cover)	8.5" < X ≤ 40", 6 40" < X ≤ 52", 8 52" < X ≤ 72", 10	
1 1/4" Screw (for Base, 1 1/4" S & 3/4" D, Inside Mount) (without Rail Cover)	4	
M3.8x38mm screw (for Outside Mount)	L bracket qty*2	
Spacer Block (Optional, Outside Mount)	1pc to extend distance 10mm 2pcs to extend distance 18mm	
M3x3.6mm Screw (for Outside Mount)	L bracket qty	

Bracket Installation

Notes: when installing the Cord Equalizer Housing Cover, it is suggested to secure the bottom covers first and then unfasten the top cord to secure the top covers.

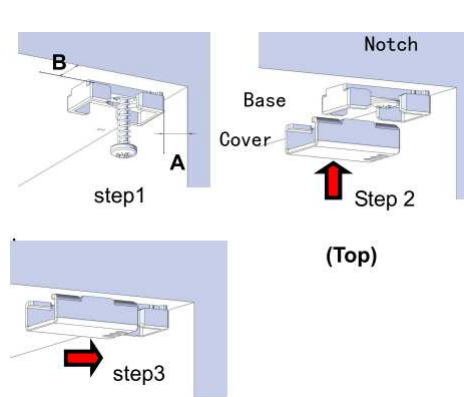
A. Without Rail Cover (Only available for 3/8" S, 1/2" D, 9/16" S, 3/4" S, not available for 1 1/4" S & 3/4" D)

*Inside Mount

For flush mount, the minimum distance from the top/bottom wall to the Cord Equalizer Housing base side is B and A from the side wall to the edge of Base. Use M3.5x25mm Screw to secure the base. Align the cover with the notch of the base and push the cover in toward the wall.

TOP:

For 3/8" S, A=1/8" & B=3/8"
For 9/16" S, A=1/8" & B=1/2"
For 3/4" S & 1/2" D, A=1/8" & B=5/8"

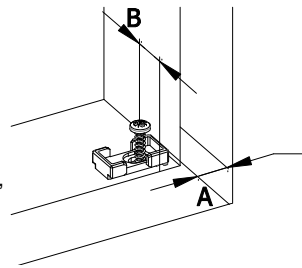


BOTTOM:

For 3/8" S,
A=1/8" & B=3/8"

For 9/16" S,
A=1/8" & B=1/2"

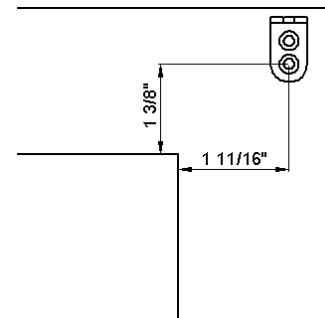
For 3/4" S & 1/2" D,
A=1/8" & B=5/8"



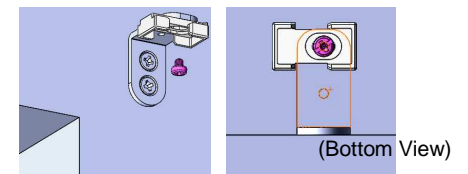
*Outside Mount

TOP: Use two M3.8x38mm screws to fasten the L bracket.

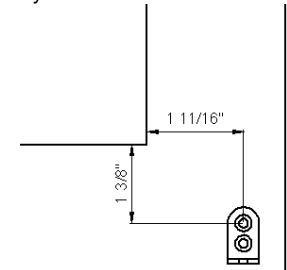
Once the L bracket is installed, use one M3 x 3.6mm bolt to attach base. Finally, align the cover with the notch of the base and push the cover in, as shown in "Inside Mount" illustration.



(The shade width and length is 4" larger than the window opening)

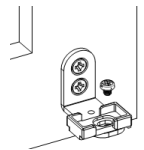


BOTTOM: Install the bracket similar to top steps but in reverse way.



(The shade width and length is 4" larger than the window opening)

Use M3.8x38mm screws to fasten the L bracket and one M3x 3.6mm bolt to attach base on L bracket.

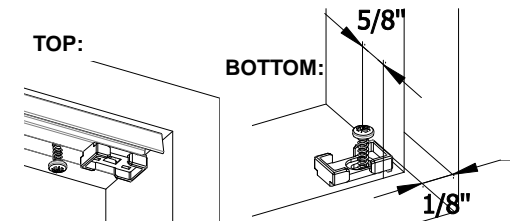


B. With Rail Cover

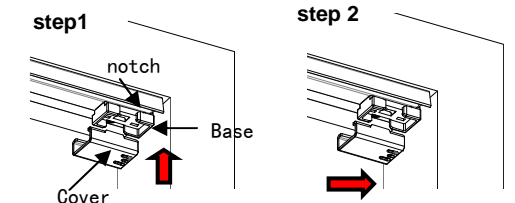
*Inside Mount

Inside Mount – for 3/8" Single Cell

For flush mount, use M3.5x25mm Screw to secure the rail cover and the base.



Align the cover with the notch of the base and push the cover in toward the wall.



Inside Mount – for 1/2" Double Cell, 9/16" Single Cell, 3/4" Single Cell, 1 1/4" Single Cell & 3/4" Double Cell.

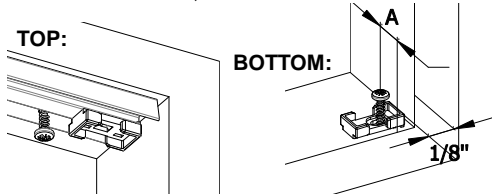
For flush mount, use M3.5x25mm Screw to secure the rail cover.

Align the cover with the notch of the base and push the cover in toward the wall as above picture.

For 9/16"S, A=1/2"

For 3/4"S & 1/2"D, A=5/8"

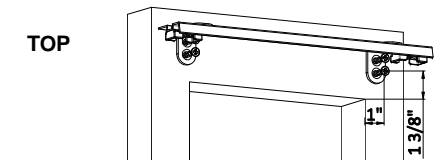
For 3/4"D & 1 1/4"S, A=1 1/4"



***Outside Mount**

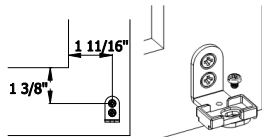
Outside Mount –for 3/8" Single Cell, 1/2" Double Cell, 9/16" Single Cell & 3/4" Single Cell (Not available for larger cell size)

Use two M3.8x38mm screws to fasten the L bracket. Then, align the cover with the notch of the base and push the cover in, as shown in "Inside Mount" illustration.



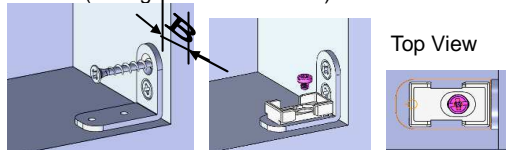
BOTTOM

Use M3.8x38mm screws to fasten the L bracket and one M3x3.6mm bolt to attach base on L bracket.



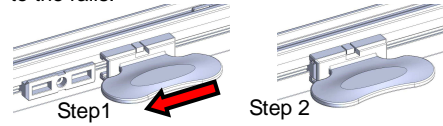
Side mount L bracket for windows with marble sill (optional) (Not available for larger cell size)

Allocate a distance of B (B=5/8" for 3/8"S) from bottom corner window frame and use two M3.8x38mm screws to secure the L bracket. Use one M3 x 3.6mm bolt to attach base to the L bracket (through inner screw hole)

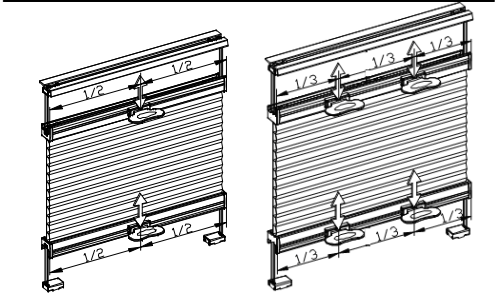


Handle Installation

Slide the handle onto the plastic piece pre-attached to the rails.



Operate you shade



Notes

For child safety, please check and ensure that there are no loose cords after the shade is completely installed.

Please also make sure that cords are nice and tight and not tangled.



Cleaning

Routine cleaning will help maintain the beauty of your shade. The shade can be cleaned by using a soft brush, vacuumed with a low suction hand-held vacuum, cleaned ultrasonically (specify that a mild solution must be used and that the head rail should never be immersed in liquid), or dampen a clean cloth with a warm water and mild detergent solution to dab the spot until it's gone (do not rub!).

