

# 2" Classic E Faux Wood Blinds

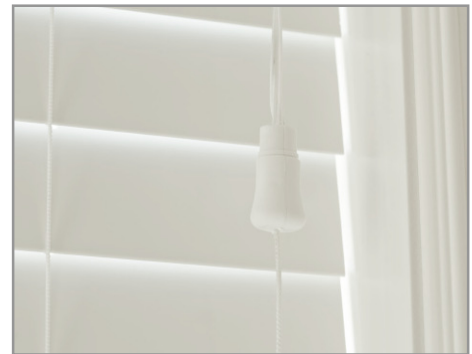
Program Reference Guide

### Features & Benefits

- Standard 2" slats with SafeNotch™ route holes
- Upgraded 3 ¼" designer crown valance for a timeless appearance
- Reengineered bottomrail enhances structural integrity and eliminates bowing when blind is semi-raised
- Advanced tilting mechanism makes tilting blinds easier than ever
- Innovative Insta-Lock™ system locks blinds at any position effortlessly
- Patented child safe and pet safe cord release device
- Moisture-resistant, fire resistant and lead free

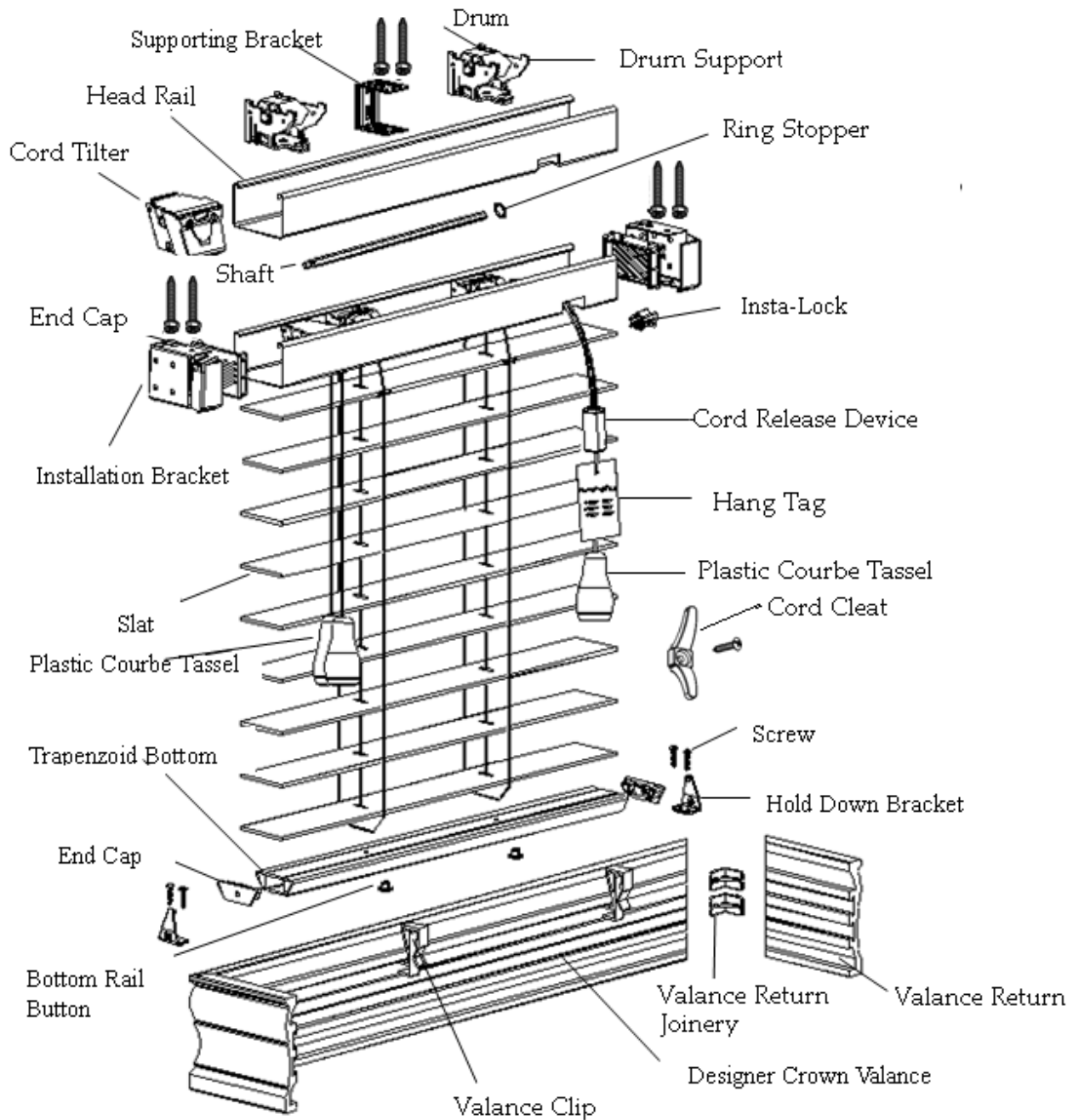


Designer Crown  
Valance



Cord Release Device

## Terminology



### General Specifications

- 3 1/4" designer crown valance
- Standard cord tilt (tilt on left, lift on right)
- Semi-inside mount valance return included: 3/4"
- Outside mount valance return included: 2 13/16"
- Low profile steel headrail
- Engineered trapezoid bottomrail

### Available Colors

- Designer White (E008)
  - Pearl (E006)
  - Alabaster (E025)
  - Birch (E032)
  - Chestnut (E226)\*
  - Black Walnut (E221)\*
- \*15% surcharge for printed colors

### Options

- Common Valance: center splice for widths over 96"
- Options not available: 2-on-1 or 3-on-1, cloth tapes, wand tilt
- Next day ship (surcharge applies)
- Valance straight cut (surcharge applies)

### Mounting Depth Requirements

Slat Size	Semi-Inside Mount	Fully Inside Mount
2"	2 3/16"	3 5/16"

## General Specifications

### Ladder Chart

Blind Width	# of Ladders	# of Cords
24" or less	2	2
24 1/8" - 37"	3	2
37 1/8" - 50"	4	4
50 1/8" - 63"	5	3
63 1/8" - 76"	6	4
76 1/8" - 89"	7	5
89 1/8" - 96"	8	6

Note : Number of ladders may vary if the blind order is close to the maximum width

### Size Limitations

	Minimum	Maximum
<b>Width</b>	8 1/2"	96"
<b>Length</b>	10"	90"

Note : Center tilt only if blind width is less than 13"

### Standard Deductions

- Inside Mount: Order Width – 3/8" = Blind Width
- Outside Mount: Order Width = Blind Width

### Valance & Valance Returns

Valance Return size (Inner Dimension)	Drawings (Top View)	Valance Length (Inner Dimension)
3/4" & 2 13/16"	<p>The diagram shows a top view of a valance return. It features a central 'Head Rail' with a width of 12.7mm [0.5"]. The return itself has a height of 78mm [3 1/16"]. The total length is labeled as 'Valance Length'. Two clips are shown on the bottom edge of the return, which would attach to the head rail.</p>	Blind width + 1"

\*Valance Return Length: min 1/2"; max 8"

\*Both 3/4" and 2 13/16" valance returns are included inside of the package

### Hardware

Blind Width	Installation Bracket	Supporting Bracket	Valance Clip	Valance Return Joinery
$W \leq 37"$	2	0	2	4
$37" < W \leq 47"$	2	1	3	4
$47" < W < 60"$	2	2	3	4
$60" \leq W \leq 75"$	2	2	4	4
$75" < W \leq 96"$	2	3	4	4