

2016 Track Shutters—Bypass



Guidelines and Specs:

<u>Description</u>	<u>Minimum</u>	<u>Maximum</u>		
		1 7/8"	2 1/2"	3 1/2" ; 4 1/2"
Single-Panel Width (Woodlore)	6"	24"	30"	30"
Single-Panel Height	10"	133"	133"	133"

Outside Mount

Max frame-to-frame width: window width + 3"

Max frame-to-frame height: window height + 4 1/2"

Semi-Inside Mount

Max frame-to-frame width: window width - 1/8"

Max frame-to-frame height: window height + 1 3/8"

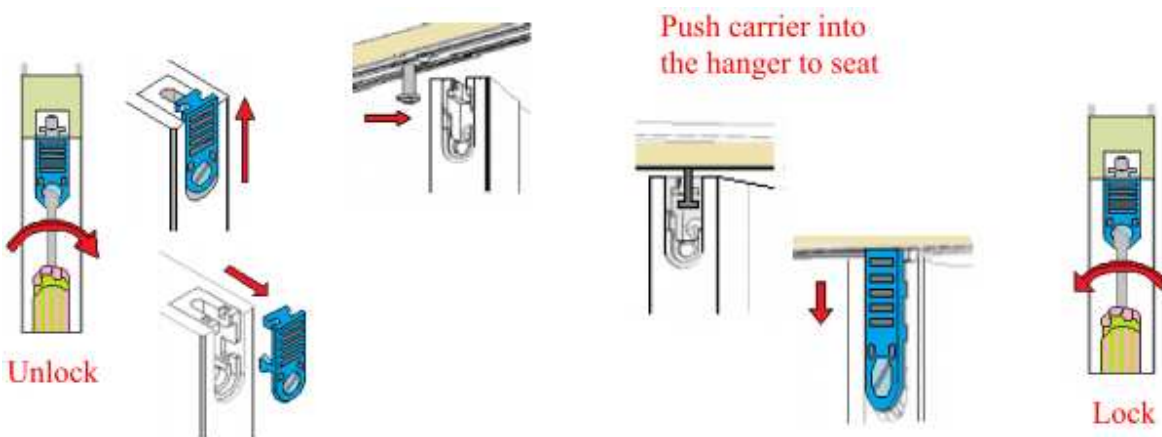
Inside Mount

Max frame-to-frame width: window width - 1/8"

Max frame-to-frame height: window height - 1/8"

Carriers are in the Track / Hangers are in the Panel:

Adjustments to panel alignment are made by turning the Carrier Bolt with the wrench included in the Hardware Box

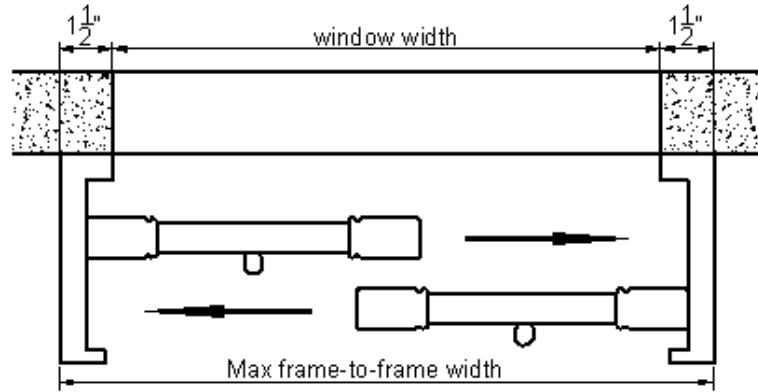


2016 Track Shutters—Bypass

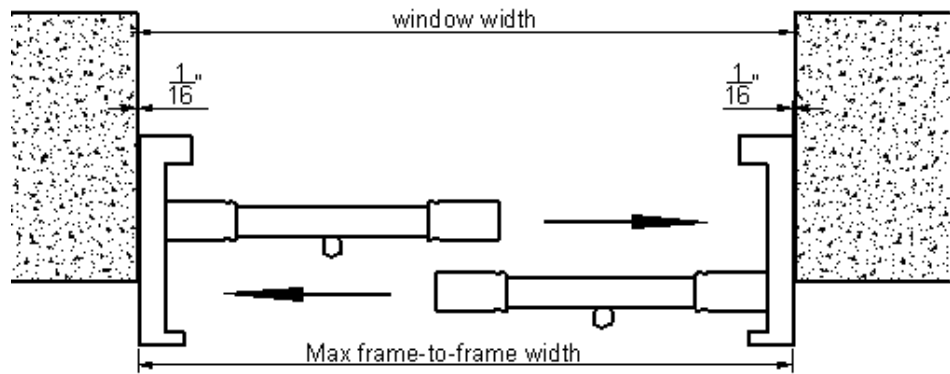
Woodlore® Shutters

Top View

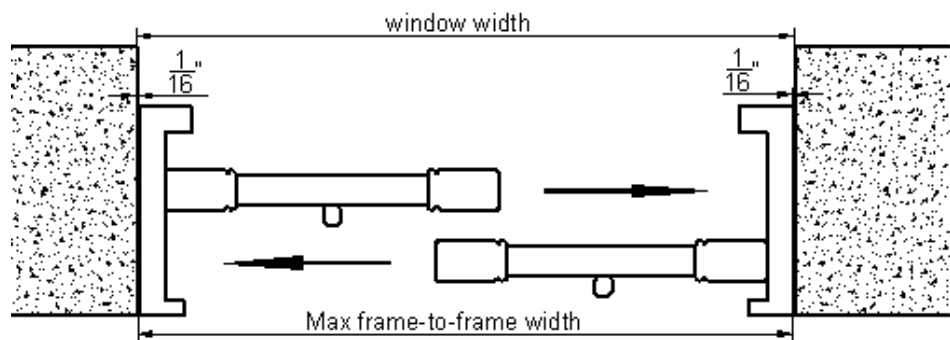
Outside Mount



Semi-Inside Mount



Inside Mount

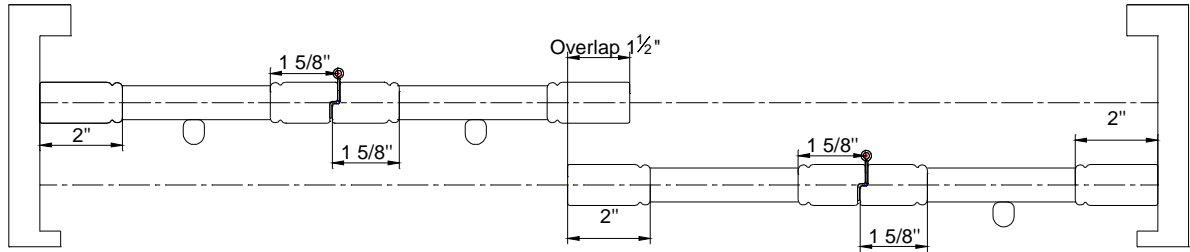


2016 Track Shutters—Bypass



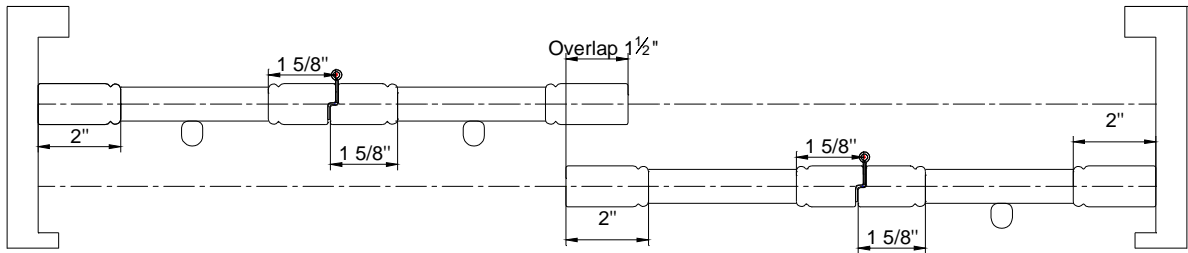
Top View

Combi - joined Panels (optional)

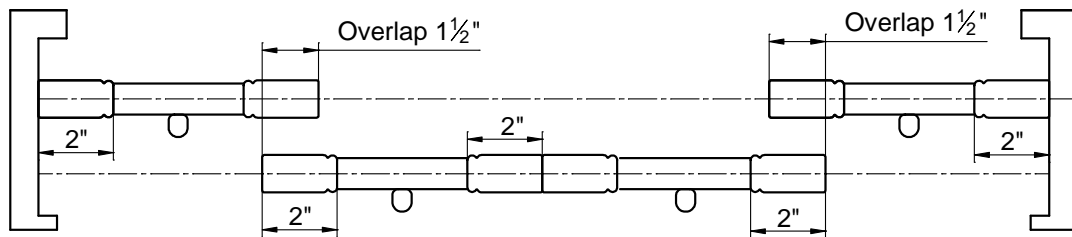


For shutters with 4 or more panels, please select "side open" or "center open"

Side Open



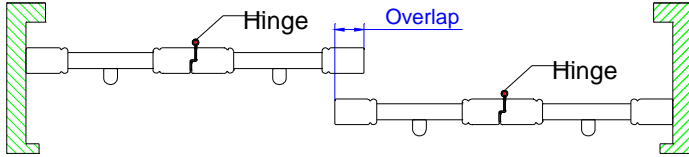
Center Open



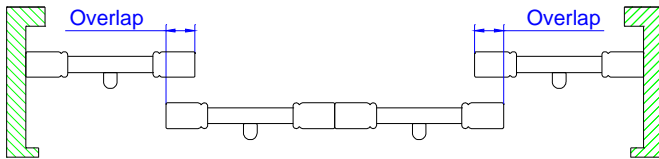
2016 Track Shutters—Bypass



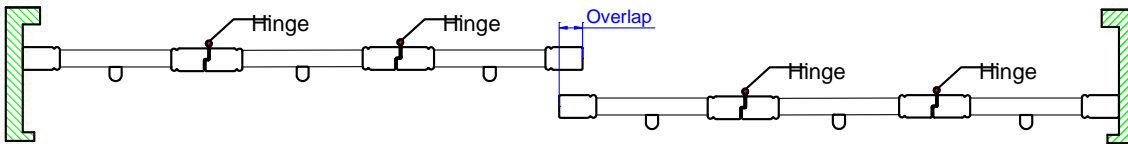
4 panels side open w/Rabbit stile



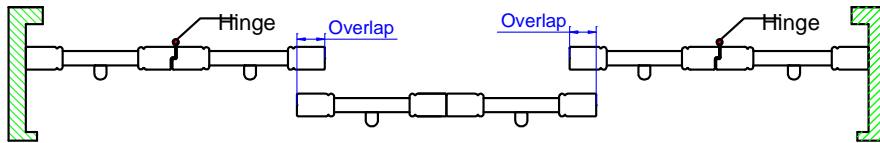
4 panels center open w/Rabbit stile



6 panels side open w/Rabbit stile



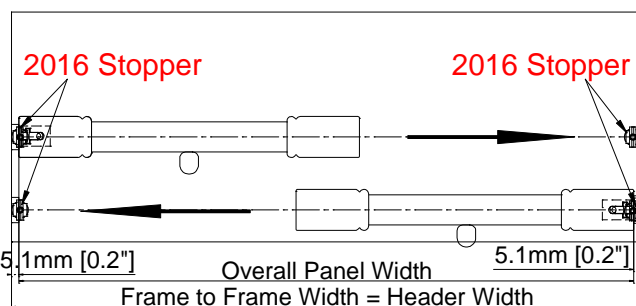
6 panels center open w/Rabbit stile



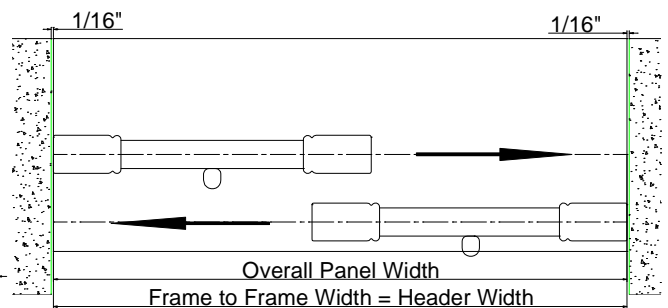
Stile: Only 2", 2 1/4" rabbit stile is available,
 1 5/8" rabbit stile only used for combi-joined panels.
 Center stile is not available.

Size Definition

For Semi-Inside/OM without side boards



For IM without side boards

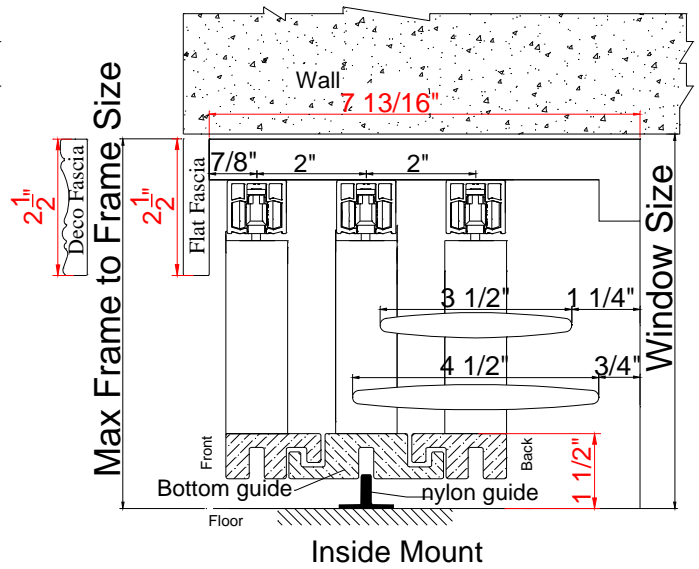
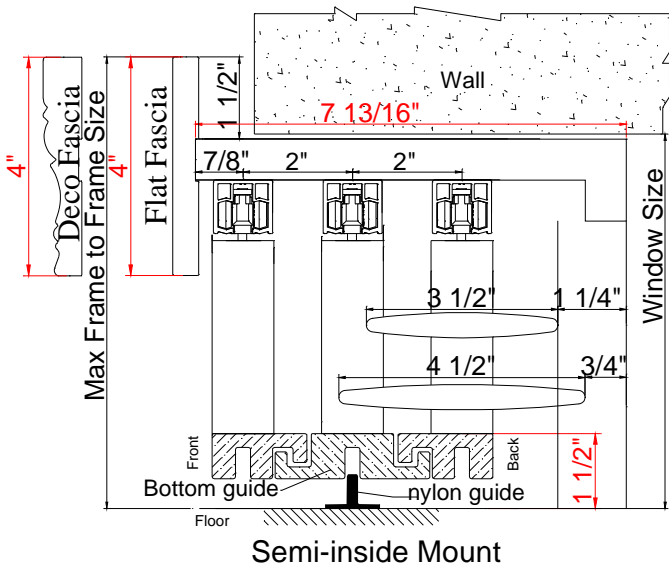
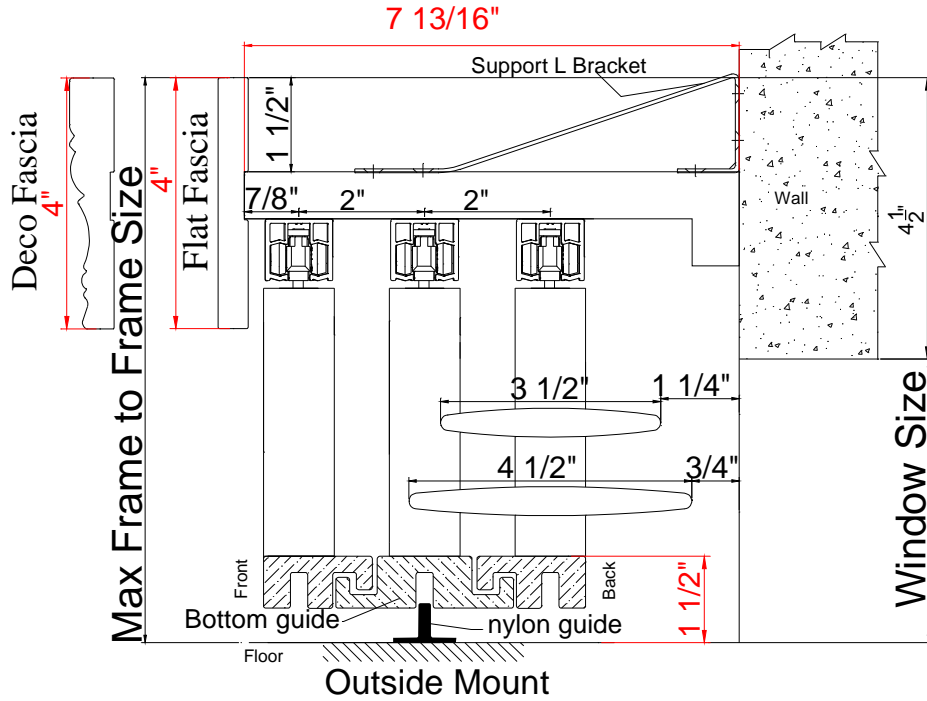


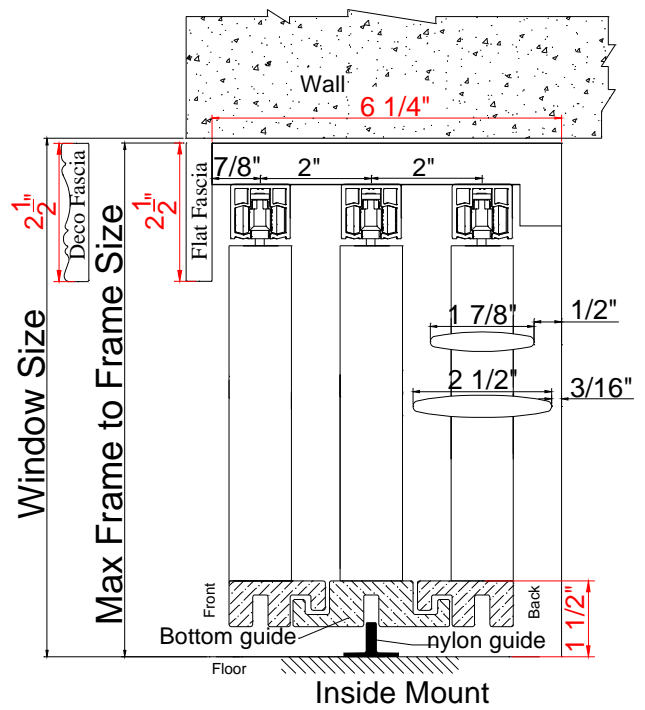
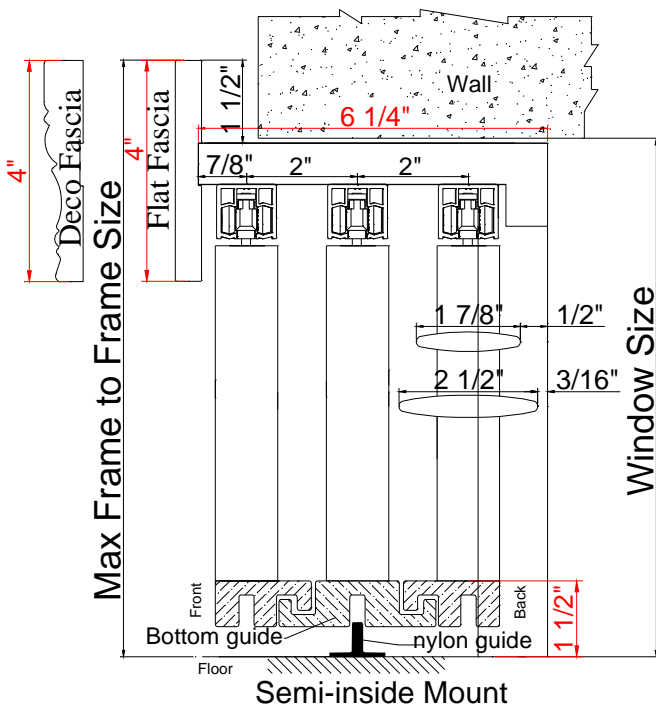
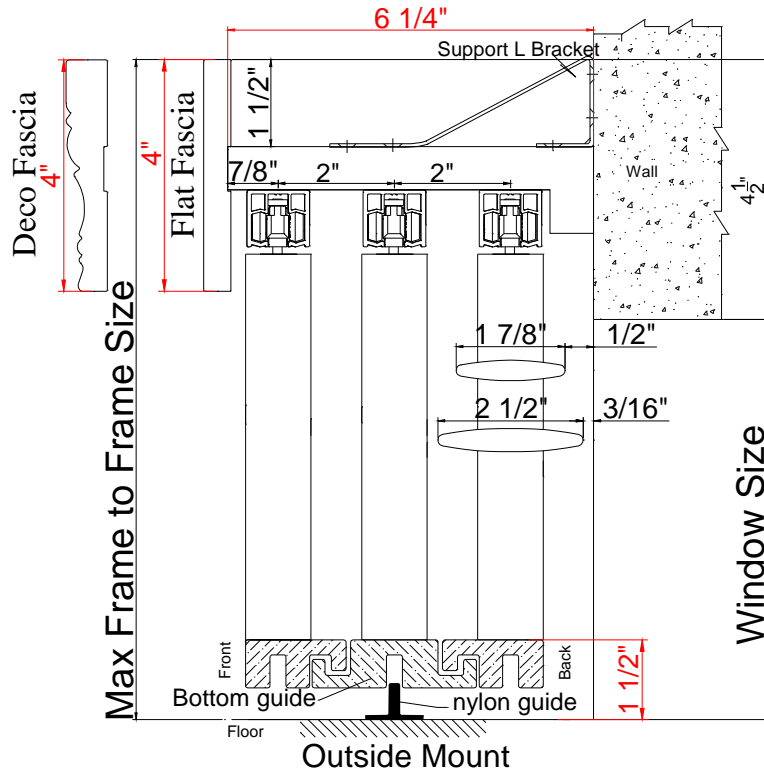
Note: For Semi-Inside/OM bypass without side boards but with fascia return, 2016 Stopper will be supplied.

2016 Track Shutters—Bypass



Mounting Options (Closed Bypass with 3 Tracks):





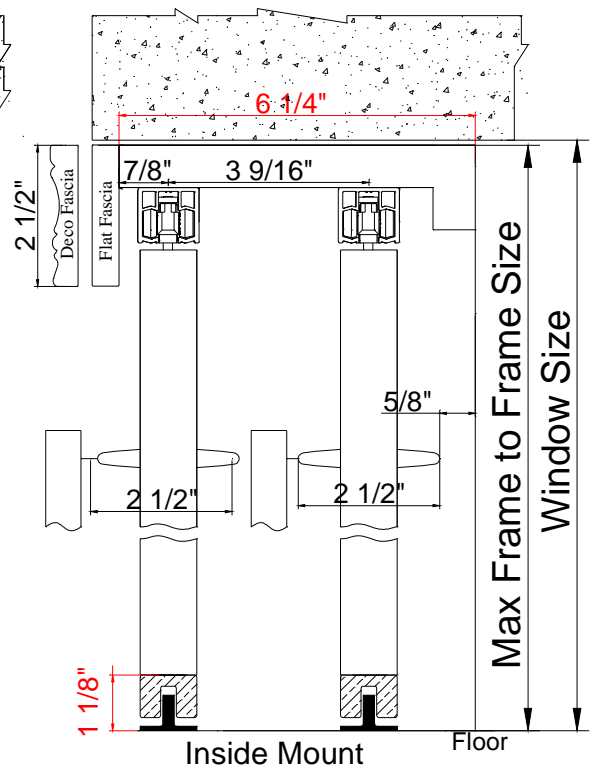
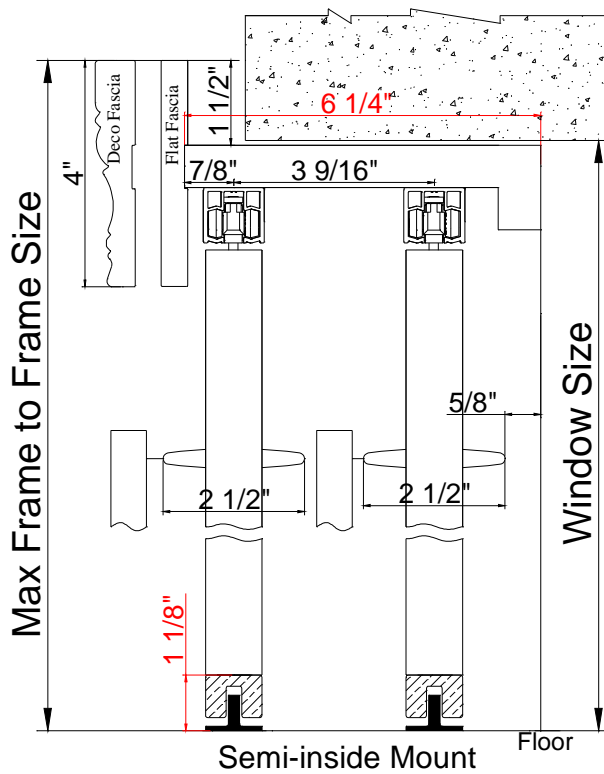
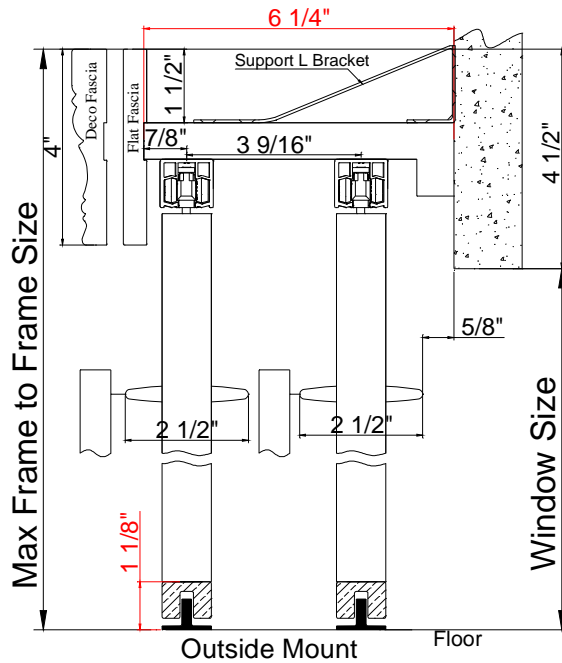
2016 Track Shutters—Bypass



Mounting Options (Opened Bypass)

Only available in 2 1/2" and 3 1/2" louver sizes

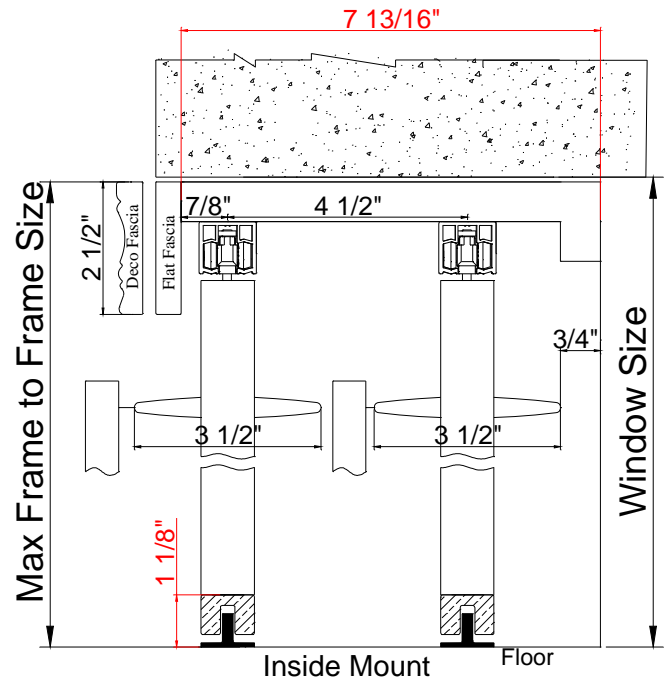
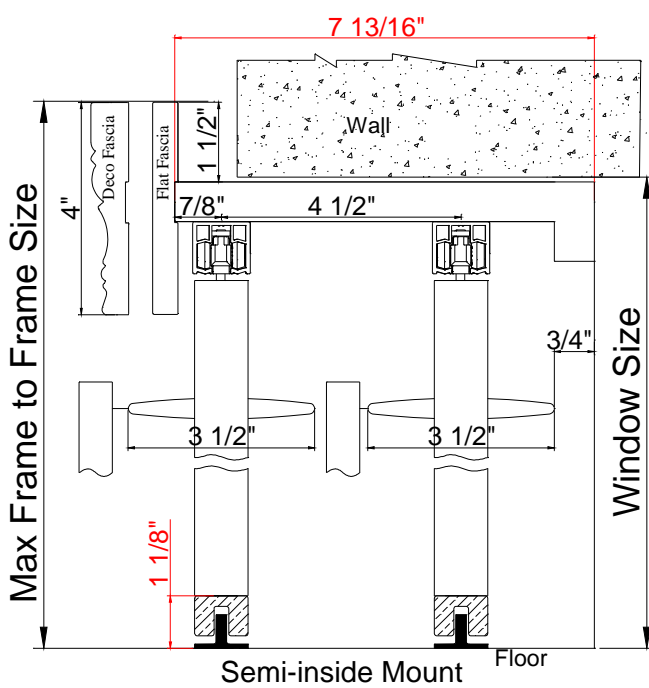
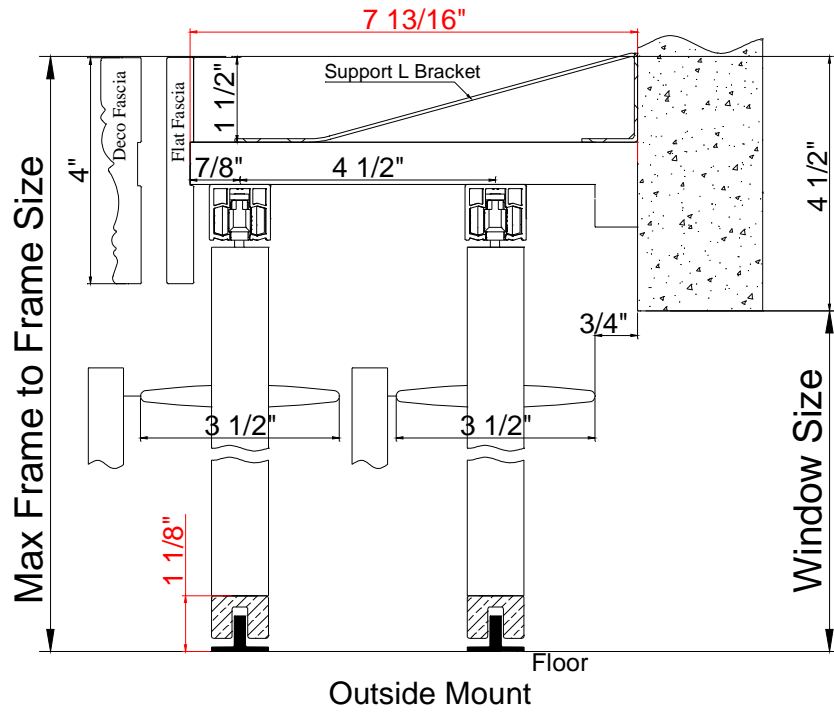
2 1/2" Louver



2016 Track Shutters—Bypass



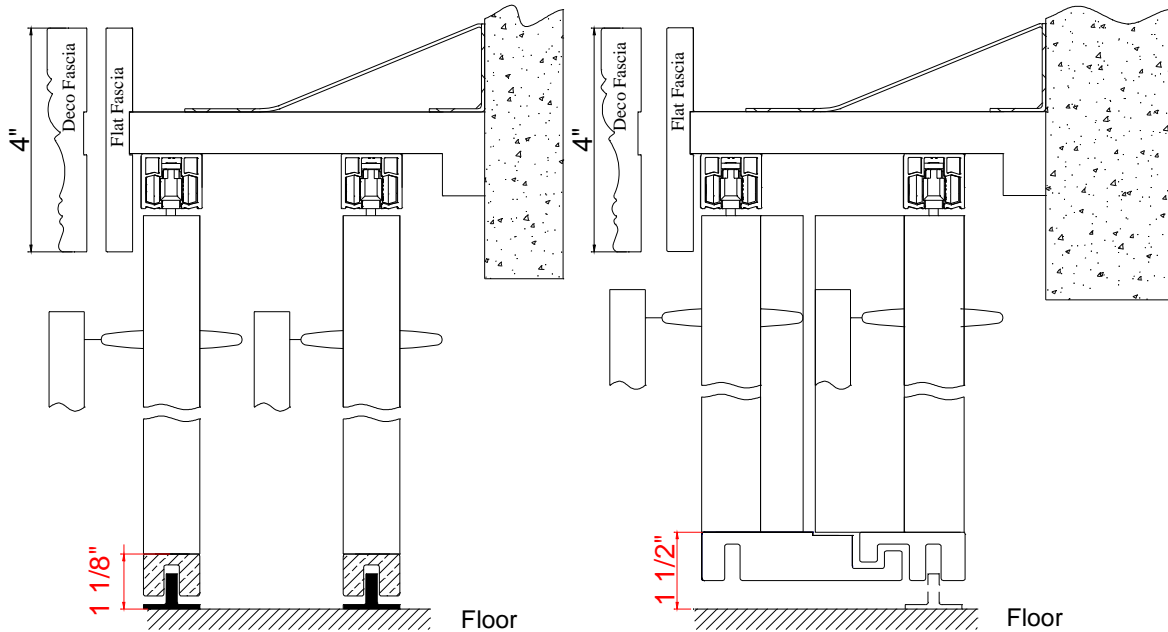
3 1/2" Louver



2016 Track Shutters—Bypass



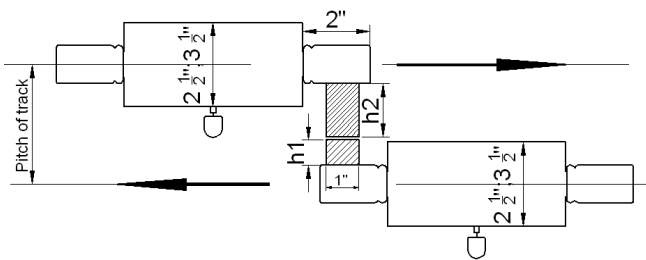
Open By Pass: has 2 kinds of bottom guide



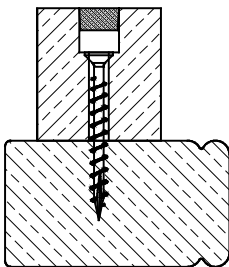
Default Bottom Guide

Optional Interlocking Bottom Guide

Opened Bypass (Top View)



Note: The light block for open bypass will be changed to use screws with wood plugs instead of current dowels.



Separation of track

Louver	U shape bottom guide		Interlocking bottom guide	
	Regular Tilt Rod	Invisible tilt	Regular Tilt Rod	Invisible tilt
2.5"	3 9/16"	2 3/4"	3 9/16"	3 9/16"
3.5"	4 1/2"	3 5/8"	4 1/2"	4 1/2"

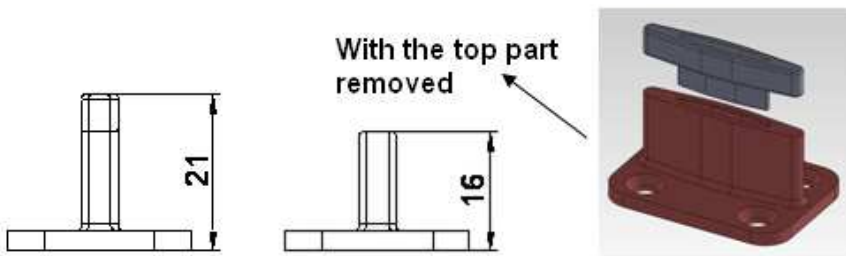
2016 Track Shutters—Bypass



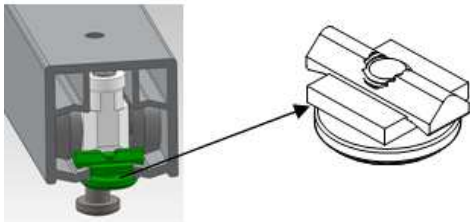
Light block thickness for panel

Louver		U shape bottom guide		Interlocking bottom guide	
		Regular Tilt Rod	Invisible tilt	Regular Tilt Rod	Invisible tilt
2.5"	h1	3/4"	3/4"	3/4"	1 9/16"
	h2	1 9/16"	3/4"	1 9/16"	3/4"
3.5"	h1	1 3/16"	1 3/16"	1 3/16"	1 15/16"
	h2	1 15/16"	1 3/16"	1 15/16"	1 3/16"

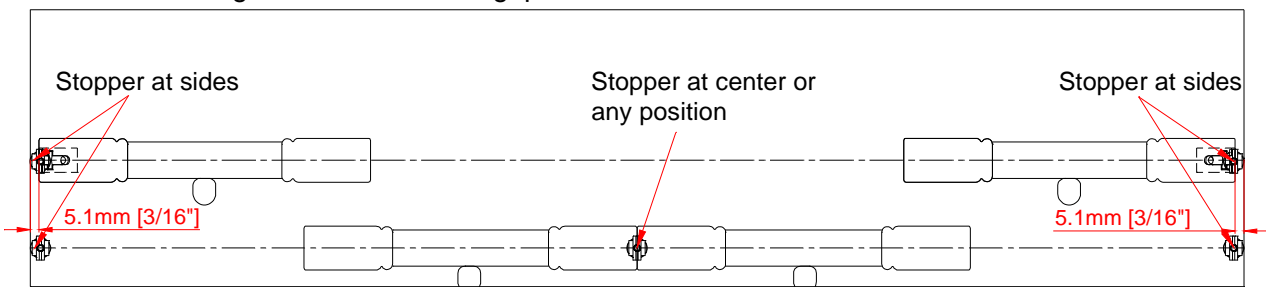
Nylon Guide: The nylon guide is composed by 2 parts and will be supplied as a whole set by default (bottom part 16mm and top part 5mm), please remove the top part if necessary.



The 2016 Stopper



For outside mount/semi-inside mount bypass without side boards but with fascia returns, the 2016 Stopper will be supplied by default. The gap between the fascia return and the panel is 5mm each side. The 2016 stopper can also be used in the center or any position of the top track as an option. Please see drawing below to show the gap.



Track Shutters Framing Materials

Framing	Size				Pc(s)
L Shape Header	Header (Closed Bypass)	Header (Opened Bypass)	Supporting Strip		1 pc
(2 in 1)	$\frac{3}{4}$ " x $5\frac{1}{2}$ "* (Default for Outside Mount; Optional for Semi-Inside and Inside Mount)	$\frac{3}{4}$ " x $6\frac{1}{4}$ "* ($2\frac{1}{2}$ " Louver)	$\frac{3}{4}$ " x $\frac{3}{4}$ "		
Header with Supporting Strip	$\frac{3}{4}$ " x $4\frac{1}{2}$ "* (Default for Semi-Inside and Inside Mount; Optional for Outside Mount)	$\frac{3}{4}$ " x $7\frac{13}{16}$ "* ($3\frac{1}{2}$ " Louver)			
	Custom * ≤ 8 "	Custom * ≤ 8 "			
U Shape Side Frame	Side Frame (Closed Bypass)	Side Frame (Opened Bypass)	Supporting Strip	Side Fascia	2 pcs
(3 in 1)	$\frac{3}{4}$ " x $5\frac{7}{8}$ "* (Default for Outside Mount; Optional for Semi-Inside and Inside Mount)	$\frac{3}{4}$ " x $6\frac{5}{8}$ "* ($2\frac{1}{2}$ " Louver)	$\frac{3}{4}$ " x $\frac{3}{4}$ "	$\frac{3}{8}$ " x $1\frac{1}{4}$ "	
Side Frame with Supporting Strip & Side Fascia	$\frac{3}{4}$ " x $4\frac{7}{8}$ "* (Default for Semi-Inside and Inside Mount; Optional for Outside Mount)	$\frac{3}{4}$ " x $8\frac{1}{4}$ "* ($3\frac{1}{2}$ " Louver)			
	Custom * ≤ 8 "	Custom * ≤ 8 "			
Top Fascia (Plain/Deco)	4" (Semi-inside and Outside Mount)				1 pc
	$\frac{1}{2}$ " x $2\frac{1}{2}$ " (Inside Mount)				
Top Fascia Return	4" (Semi-inside and Outside Mount)				2 pcs
	N/A (Inside Mount)				

Note:

- When the header size is $4\frac{1}{2}$ "*, $5\frac{1}{2}$ "*, $6\frac{1}{4}$ "* or $7\frac{13}{16}$ "*, the L Shape header and the U Shape Side Frame will be sent integrally. That is:
 1. The header and the supporting strip will be sent integrally as L Shape Header;
 2. The side frame, supporting strip and the side fascia will be sent integrally as U Shape Side Frame.
- For any custom header sizes other than $4\frac{1}{2}$ "*, $5\frac{1}{2}$ "*, $6\frac{1}{4}$ "* or $7\frac{13}{16}$ "*, the L Shape Header and the U Shape Side Frame will be sent separately. That is:
 1. The header and the supporting strip will be sent separately for L Shape Header;
 2. The side frame, supporting strip and the side fascia will be sent separately for U Shape Side Frame.

2016 Track Shutters—Bypass



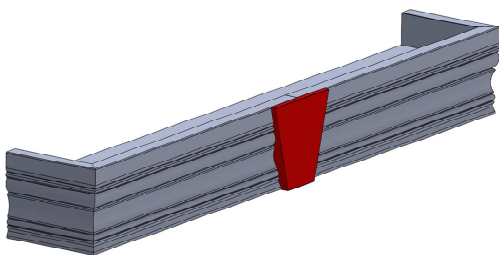
Hardware Box
Part
Wrench
Nylon Guide
3/4 " screws for Nylon Guide
Support L Bracket (based on the length of header)
2 1/2 " screws for support L bracket
3/4 " screws for support L bracket

Keystone for Fascia of the Track Shutter

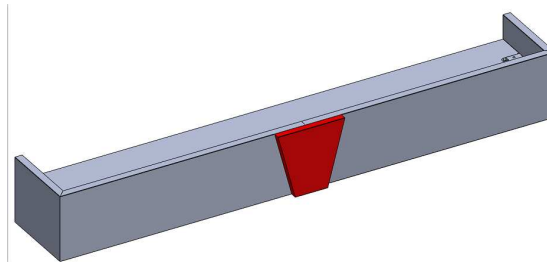
When fascia length exceeds the limitation and needs to split, keystone design fascia will be supplied without surcharge for track shutters.

For fascia length within the split limitation, keystone can also be supplied as an option with surcharge.

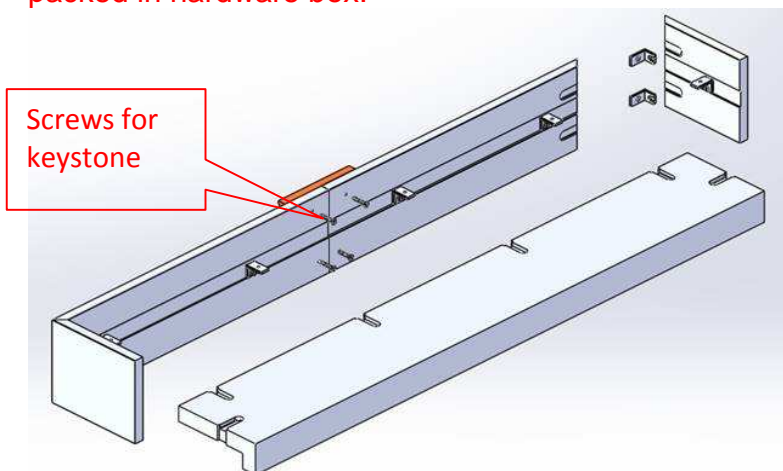
For Deco Fascia:



For Plain Fascia:



The keystone will be installed by screws. We will pre-drill the screw holes and the screws will be packed in hardware box.



2016 Track Shutters—Bypass

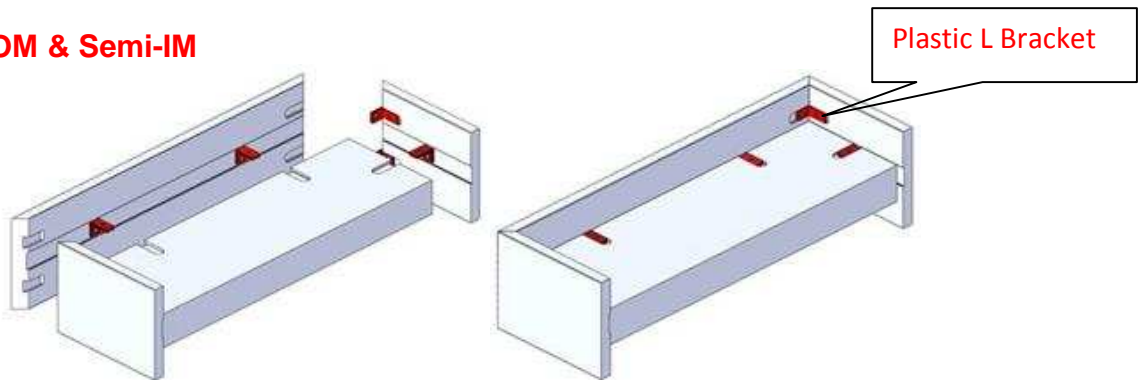


Plastic L Bracket to Connect the Header, Fascia & Fascia Returns



L Bracket will be used to connect the header, fascia and fascia returns for Bypass shutter. This applies for Inside Mount, Semi-Inside Mount & Outside Mount.

OM & Semi-IM



IM

